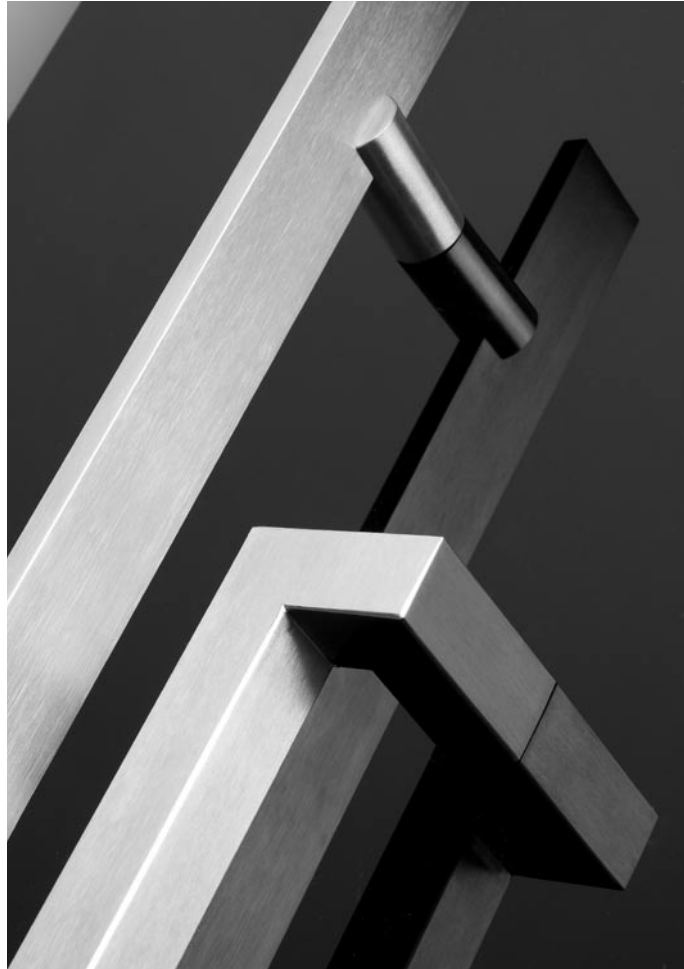


NOVAS

Entrance Handles



Contents

- Introduction
- Ordering Procedure
- Entrance Handles
- Fixing Options
- Drilling Details
- Handing
- Rose Options
- Accessories



Introduction

Nova Hardware's new range of Entrance Handles have been designed and developed with industry professionals to create a stylish and comprehensive range of handles to suit both commercial and residential applications.

This range encompasses the market demand for increasing design concepts to effectively integrate with the ever evolving aesthetic design requirements of the Australian market.

Nova Hardware, as a well known stainless steel specialist manufacturer understand that many more varying or unique designs at times will be required, we welcome the opportunity to review any variations or custom designs to meet with your specific applications.

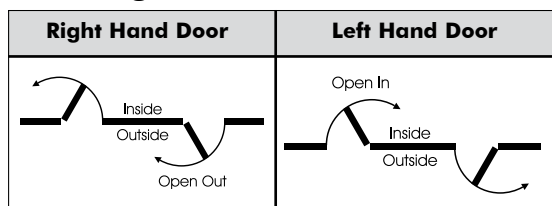
Materials

All Novas Entrance Handles are manufactured for supply from a 304 grade stainless steel as standard, specific finishes are available to ensure that protection is available for all applications dependant on their environment being either standard or extreme. Refer finishes for specific details.

Finishes

SSS	Satin Stainless Steel / 304 Grade Standard
PSS	Polished Stainless Steel / 304 Grade Standard
NC SSS	Satin Stainless Steel / NOVACOTE
NC PSS	Polished Stainless Steel / NOVACOTE
NC PB	Polished Brass / NOVACOTE

Handing



NOVACOTE - Lifetime Anti-Tarnish Guarantee

Nova Hardware, a specialist manufacturer of quality Stainless Steel products, now offer you the ultimate finish as protection for extreme environment hardware applications.

NOVACOTE, as it is technically known, provides a clear or coloured coating on the Stainless Steel that enhances the product's resistance to blemishing and discolouration.

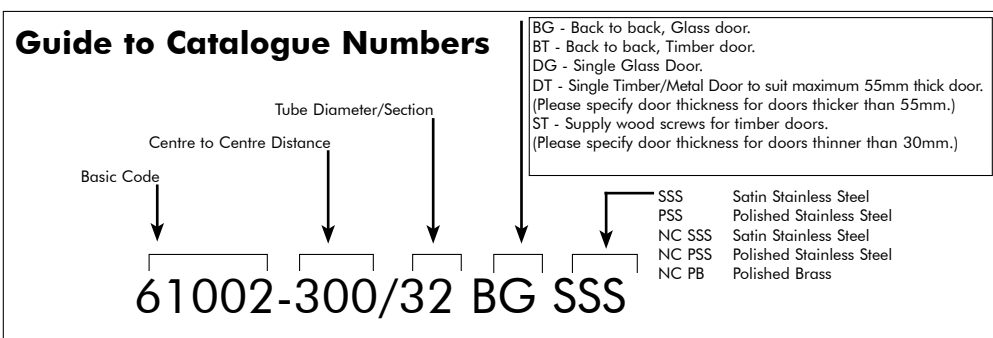
NOVACOTE is pervious to ultra violet rays and will not crack or peel, hence Nova Hardware's Lifetime Anti-Tarnish Guarantee.

Maintenance and Appearance

To preserve the appearance of all aforementioned finishes the following methods of regular maintenance should be applied at regular intervals:

Nova Entrance Handles should be cleaned with a soft grit-free cloth, clean soapy water and wiped dry. Do not use abrasives in cloth or cleaners as this will cause excessive wear and tear.

Ordering Procedure



Contact Details

Shanghai Nova Hardware Co.,Ltd
 402/Bld 4, No.1221 West Yan An Road,
 Shanghai 200050, China
 Phone: 86-21-6252 9138
 Fax: 86-21-6252 7978
 Email: sales@nova-hardware.com
 Web: www.nova-hardware.com

Guarantee

Shanghai Nova Hardware Co.,Ltd guarantee all their products against defects in workmanship and materials subject to inspection and confirmation of fair wear and tear within the normal working life of the product.

Shanghai Nova Hardware Co.,Ltd assumes no liability for:

1. Improper installation or failure to follow fitting instructions.
 2. Product failure due to improper maintenance or unfair wear and tear.
 3. Indirect or consequential loss or damage.
 4. Cost of removal and/or replacement.
 5. Cost of freight and/or travelling expenses.
 6. Some plated finishes are classified as soft finishes. Deterioration is possible under some climatic conditions and cannot be unconditionally guaranteed.
- Consult your local Nova Representative or Agent for advice on all finishes.

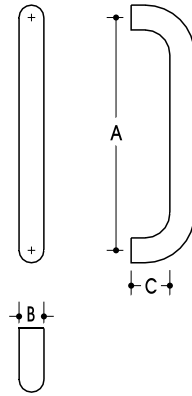


Entrance Handles

61002 Entrance Handle

Finish SSS, PSS, NC SSS, NC PSS, NC PB.

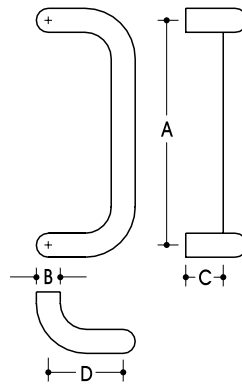
A	200	300	350	450	600	750	900
B	25	25	25	25	25	-	-
B	-	32	32	32	32	32	32
C	50	50	50	50	50	50	50



61004 Entrance Handle

Finish SSS, PSS, NC SSS, NC PSS, NC PB.

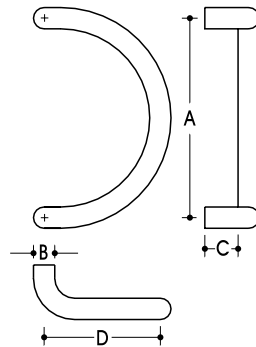
A	300	350	450	600	750	900	1000	1250	1500
B	32	32	32	32	32	32	32	32	32
C	50	50	50	50	50	50	50	50	50
D	100	100	100	100	100	100	100	100	100



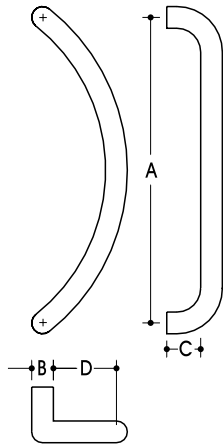
61006 Entrance Handle

Finish SSS, PSS, NC SSS, NC PSS, NC PB.

A	300
B	32
C	50
D	200



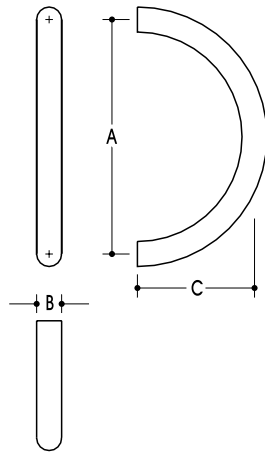
Entrance Handles



61008 Entrance Handle

Finish SSS, PSS, NC SSS, NC PSS, NC PB.

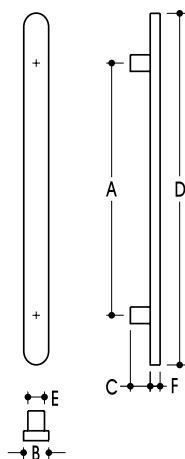
A	450	600
B	25	25
B	32	32
C	50	50
D	38	75



61010 Entrance Handle

Finish SSS, PSS, NC SSS, NC PSS, NC PB.

A	300
B	32
C	150



61012 Entrance Handle

Finish SSS, PSS, NC SSS, NC PSS, NC PB.

Standoffs \varnothing 25mm Diameter Straight

A	300	450
B	38	38
C	50	50
D	450	600
E	25	25
F	25	25

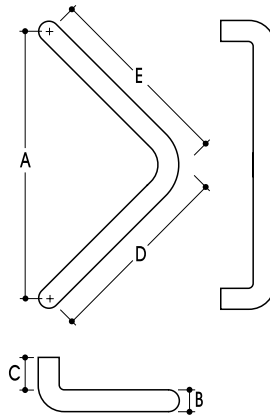


Entrance Handles

61014 Entrance Handle

Finish SSS, PSS, NC SSS, NC PSS, NC PB.

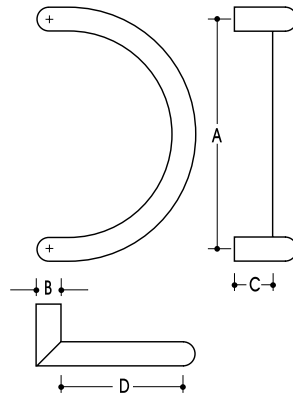
A	354	424
B	25	-
B	32	32
C	50	50
D	250	300
E	250	300



61015 Entrance Handle

Finish SSS, PSS, NC SSS, NC PSS, NC PB.

A	300
B	32
C	50
D	150



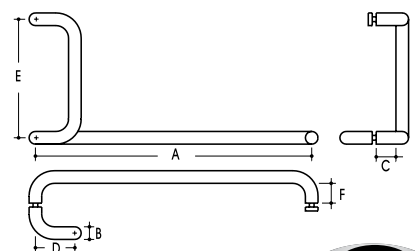
61016 Entrance Handle

Finish SSS, PSS, NC SSS, NC PSS, NC PB.

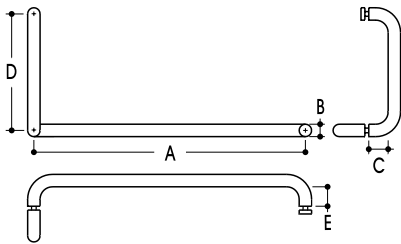
A	700	700
B	25	32
C	50	50
D	75	100
E	300	300
F	80	80

Handing

Specify left hand (LH) or right hand (RH)
Refer to handing chart.



Entrance Handles



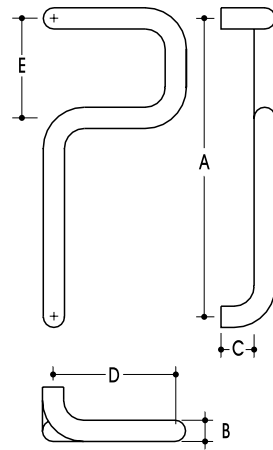
61017 Entrance Handle

Finish SSS, PSS, NC SSS, NC PSS, NC PB.

A	700	700
B	25	32
C	50	50
D	300	300
E	80	80

Handing

Specify left hand (LH) or right hand (RH)
Refer to handing chart.



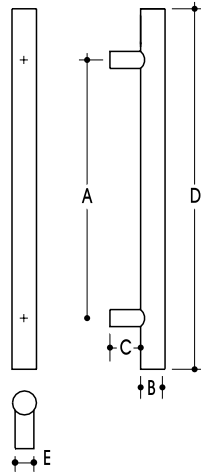
61018 Entrance Handle

Finish SSS, PSS, NC SSS, NC PSS, NC PB.

A	450	600
B	32	32
C	50	50
D	150	150
E	200	200

Handing

Specify left hand (LH) or right hand (RH)
Refer to handing chart.



61019 Entrance Handle

Finish SSS, PSS, NC SSS, NC PSS, NC PB.

Standoffs 25mm Diameter Straight

A	150	300	450	600	850	1100	1350	1600	1850
B	32	32	32	32	32	32	32	32	32
C	45	45	45	45	45	45	45	45	45
D	300	450	600	750	1000	1250	1500	1750	2000
E	25	25	25	25	25	25	25	25	25



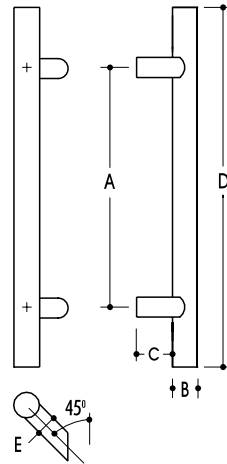
Entrance Handles

61019M Entrance Handle

Finish SSS, PSS, NC SSS, NC PSS, NC PB.

Standoffs 25mm Diameter, 45° Mitred / Offset

A	150	300	450	600	850	1100	1350	1600	1850
B	32	32	32	32	32	32	32	32	32
C	45	45	45	45	45	45	45	45	45
D	300	450	600	750	1000	1250	1500	1750	2000
E	25	25	25	25	25	25	25	25	25

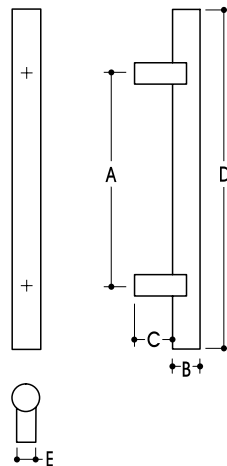


61019SQ Entrance Handle

Finish SSS, PSS, NC SSS, NC PSS, NC PB.

Standoffs 25mm Square Straight

A	150	300	450	600	850	1100	1350	1600	1850
B	32	32	32	32	32	32	32	32	32
C	45	45	45	45	45	45	45	45	45
D	300	450	600	750	1000	1250	1500	1750	2000
E	25	25	25	25	25	25	25	25	25

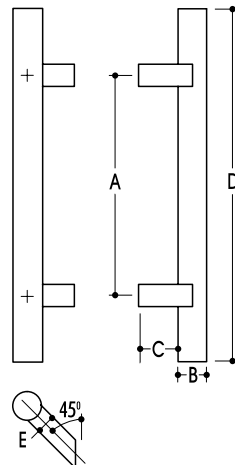


61019SQM Entrance Handle

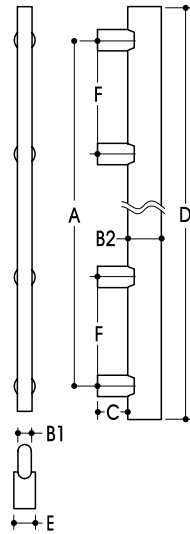
Finish SSS, PSS, NC SSS, NC PSS, NC PB.

Standoffs 25mm Square, 45° Mitred / Offset

A	150	300	450	600	850	1100	1350	1600	1850
B	32	32	32	32	32	32	32	32	32
C	45	45	45	45	45	45	45	45	45
D	300	450	600	750	1000	1250	1500	1750	2000
E	25	25	25	25	25	25	25	25	25



Entrance Handles

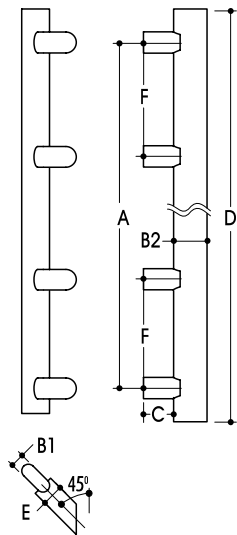


61021L Entrance Handle

Finish SSS.

Standoffs 25mm Diameter Straight

A	925	1175	1425	1675	1925
B1	16	16	16	16	16
B2	40	40	40	40	40
C	35	35	35	35	35
D	1000	1250	1500	1750	2000
E	25	25	25	25	25
F	309	392	475	559	642

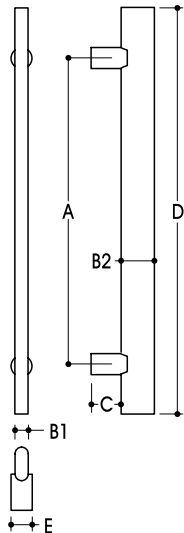


61021LM Entrance Handle

Finish SSS.

Standoffs 25mm Diameter, 45° Mitred / Offset

A	925	1175	1425	1675	1925
B1	16	16	16	16	16
B2	40	40	40	40	40
C	35	35	35	35	35
D	1000	1250	1500	1750	2000
E	25	25	25	25	25
F	309	392	475	559	642



61021S Entrance Handle

Finish SSS.

Standoffs 25mm Diameter Straight

A	200	350	500	650	800
B1	16	16	16	16	16
B2	40	40	40	40	40
C	35	35	35	35	35
D	300	450	600	750	900
E	25	25	25	25	25



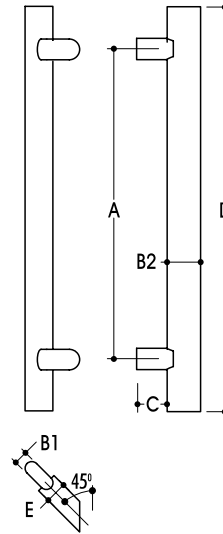
Entrance Handles

61021SM Entrance Handle

Finish SSS.

Standoffs 25mm Diameter, 45° Mitred / Offset

A	200	350	500	650	800
B1	16	16	16	16	16
B2	40	40	35	35	35
C	35	35	35	35	35
D	300	450	600	750	900
E	25	25	25	25	25

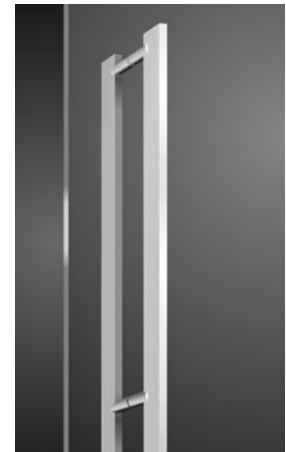
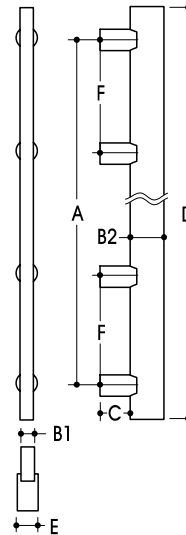


61022L Entrance Handle

Finish SSS.

Standoffs 25mm Diameter Straight

A	925	1175	1425	1625	1925
B1	16	16	16	16	16
B2	40	40	40	40	40
C	35	35	35	35	35
D	1000	1250	1500	1750	2000
E	25	25	25	25	25
F	309	392	475	559	642

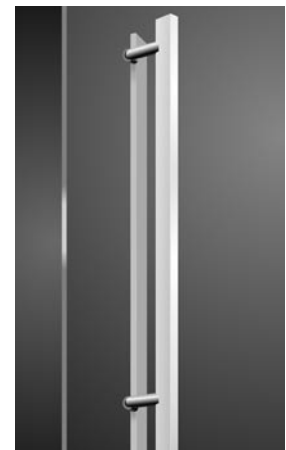
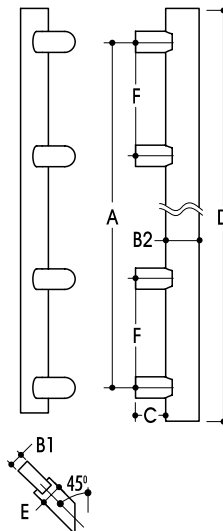


61022LM Entrance Handle

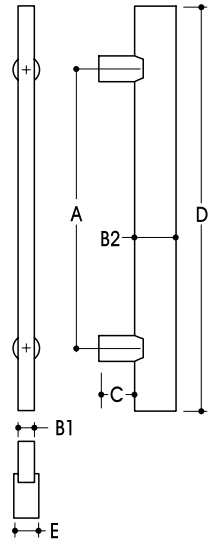
Finish SSS.

Standoffs 25mm Diameter, 45° Mitred / Offset

A	925	1175	1425	1675	1925
B1	16	16	16	16	16
B2	40	40	40	40	40
C	35	35	35	35	35
D	1000	1250	1500	1750	2000
F	309	392	475	559	642
E	25	25	25	25	25



Entrance Handles

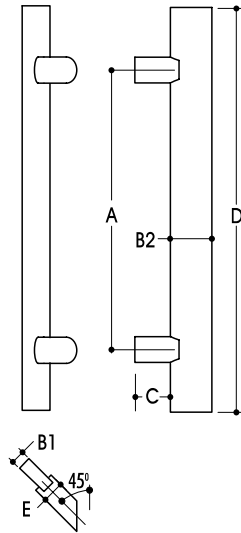
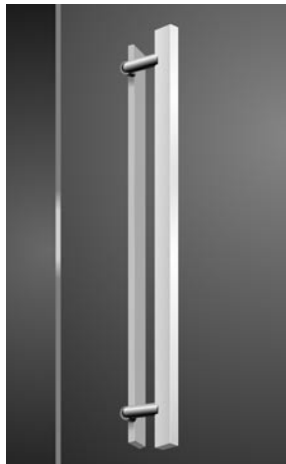


61022S Entrance Handle

Finish SSS.

Standoffs 25mm Diameter Straight

A	200	350	500	650	800
B1	16	16	16	16	16
B2	40	40	40	40	40
C	35	35	35	35	35
D	300	450	600	750	900
E	25	25	25	25	25

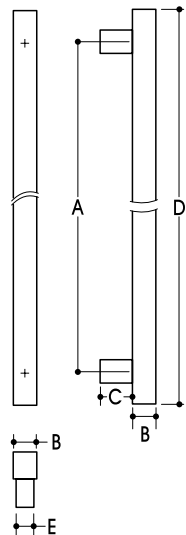


61022SM Entrance Handle

Finish SSS.

Standoffs 25mm Diameter, 45° Mitred / Offset

A	200	350	500	650	800
B1	16	16	16	16	16
B2	40	40	40	40	40
C	35	35	35	35	35
D	300	450	600	750	900
E	25	25	25	25	25



61023 Entrance Handle

Finish SSS, PSS, NC SSS, NC PSS, NC PB.

Standoffs 25mm Diameter Straight

A	225	375	525	675	925	1175	1425	1625	1925
B	30	30	30	30	30	30	30	30	30
C	35	35	35	35	35	35	35	35	35
D	300	450	600	750	1000	1250	1500	1700	2000
E	25	25	25	25	25	25	25	25	25



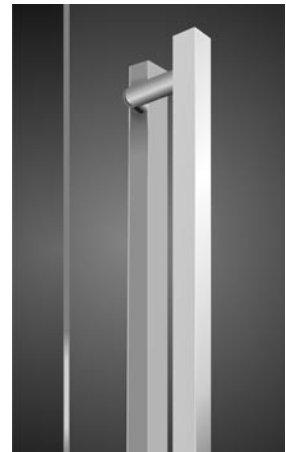
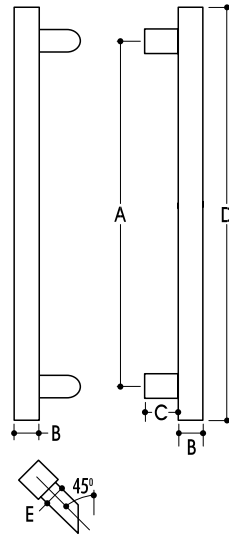
Entrance Handles

61023M Entrance Handle

Finish SSS, PSS, NC SSS, NC PSS, NC PB.

Standoffs 25mm Diameter, 45° Mitred / Offset

A	225	375	525	675	925	1175	1425	1625	1925
B	30	30	30	30	30	30	30	30	30
C	35	35	35	35	35	35	35	35	35
D	300	450	600	750	1000	1250	1500	1700	2000
E	25	25	25	25	25	25	25	25	25

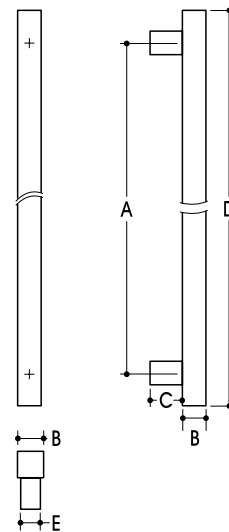


61023SQ Entrance Handle

Finish SSS, PSS, NC SSS, NC PSS, NC PB.

Standoffs 25mm Square Straight

A	225	375	525	675	925	1175	1425	1625	1925
B	30	30	30	30	30	30	30	30	30
C	35	35	35	35	35	35	35	35	35
D	300	450	600	750	1000	1250	1500	1700	2000
E	25	25	25	25	25	25	25	25	25

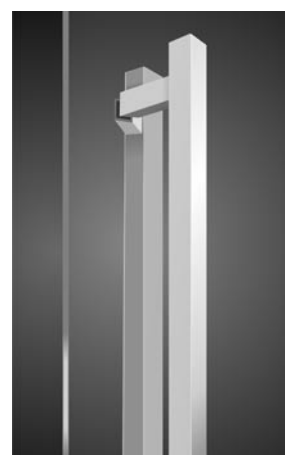
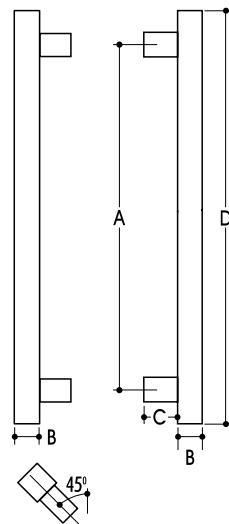


61023SQM Entrance Handle

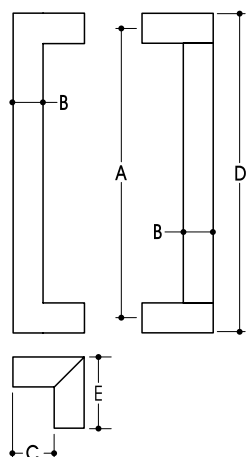
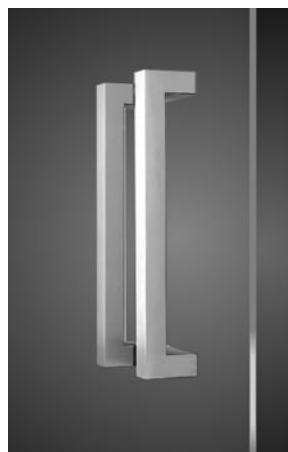
Finish SSS, PSS, NC SSS, NC PSS, NC PB.

Standoffs 25mm Square, 45° Mitred / Offset

A	225	375	525	675	925	1175	1425	1625	1925
B	30	30	30	30	30	30	30	30	30
C	35	35	35	35	35	35	35	35	35
D	300	450	600	750	1000	1250	1500	1700	2000
E	25	25	25	25	25	25	25	25	25



Entrance Handles

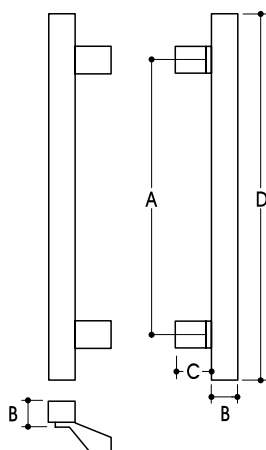


61024 Entrance Handle

Finish SSS, PSS, NC SSS, NC PSS, NC PB.

Standoffs 25mm Square, Mitred / Offset

A	300	450	600	750	900	1200	1500
B	25	25	25	25	25	25	25
C	35	35	35	35	35	35	35
D	325	475	625	775	925	1225	1525
E	60	60	60	60	60	60	60

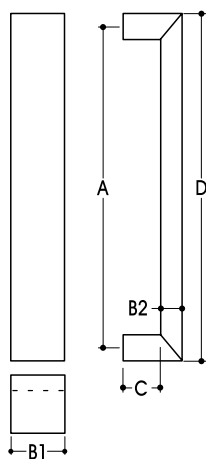
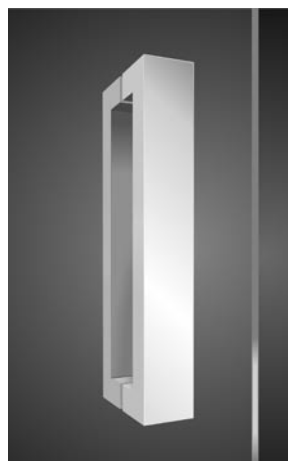


61025 Entrance Handle

Finish SSS, PSS, NC SSS, NC PSS, NC PB.

Standoffs 25mm Square, Mitred / Offset

A	275	425	575	725	825	1075	1325
B	25	25	25	25	25	25	25
C	35	35	35	35	35	35	35
D	450	600	750	900	1000	1250	1500



61026 Entrance Handle

Finish SSS, PSS, NC SSS, NC PSS, NC PB.

Standoffs 50mm x 25mm Rectangular Straight

A	300	450	600	750	900	1000	1250	1500	1750	2000
B1	50	50	50	50	50	50	50	50	50	50
B2	25	25	25	25	25	25	25	25	25	25
C	35	35	35	35	35	35	35	35	35	35
D	325	475	625	775	925	1025	1275	1525	1775	2025



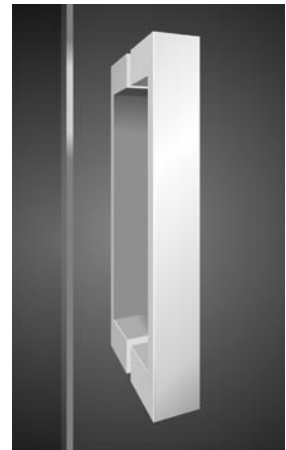
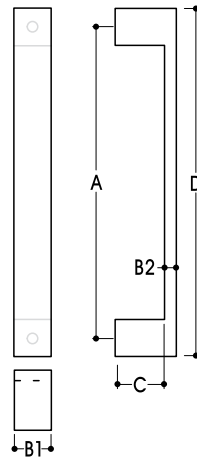
Entrance Handles

61027 Entrance Handle

Finish SSS, PSS, NC SSS, NC PSS, NC PB.

Standoffs 25mm Square Straight

A	300	450	600	750	900	1000	1250	1500
B1	25	25	25	25	25	25	25	25
B2	12	12	12	12	12	12	12	12
C	35	35	35	35	35	35	35	35
D	325	475	625	775	925	1025	1275	1525

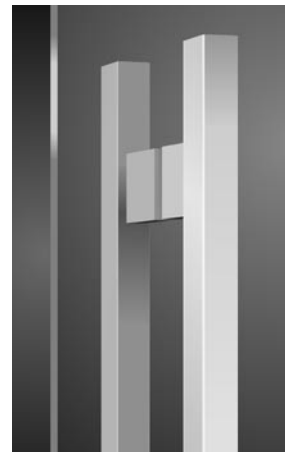
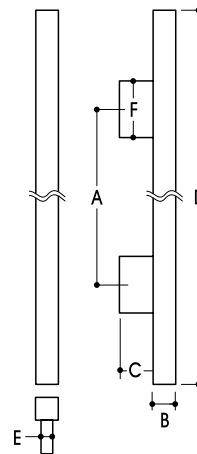


61028 Entrance Handle

Finish SSS, PSS, NC SSS, NC PSS, NC PB.

Standoffs 50mm x 25mm Rectangular Straight

A	350	500	650	750	1000	1250	1500	1750
B	40	40	40	40	40	40	40	40
C	50	50	50	50	50	50	50	50
D	600	750	900	1000	1250	1500	1750	2000
E	25	25	25	25	25	25	25	25
F	50	50	50	50	50	50	50	50

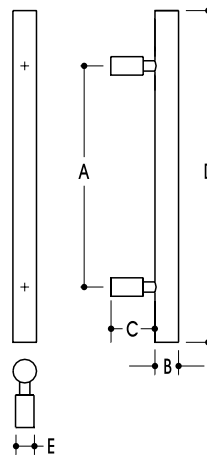


61030 Entrance Handle

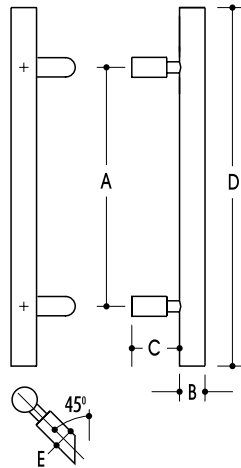
Finish SSS, PSS, NC SSS, NC PSS, NC PB.

Standoffs 25mm Diameter Straight / Stepped

A	150	300	450	600	850	1100	1350	1600	1850
B	32	32	32	32	32	32	32	32	32
C	60	60	60	60	60	60	60	60	60
D	300	450	600	750	1000	1250	1500	1750	2000
E	32	32	32	32	32	32	32	32	32



Entrance Handles

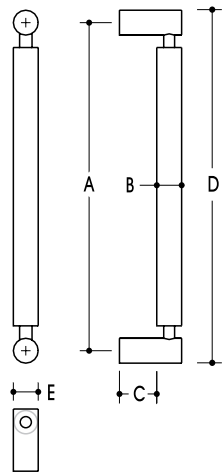


61030M Entrance Handle

Finish SSS, PSS, NC SSS, NC PSS, NC PB.

Standoffs 25mm Diameter Straight / Stepped, 45° Mitred / Offset

A	150	300	450	600	850	1100	1350	1600	1850
B	32	32	32	32	32	32	32	32	32
C	60	60	60	60	60	60	60	60	60
D	300	450	600	750	1000	1250	1500	1750	2000
E	32	32	32	32	32	32	32	32	32

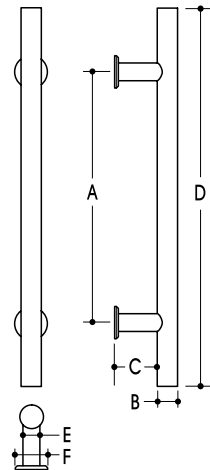


61031 Entrance Handle

Finish SSS, PSS, NC SSS, NC PSS, NC PB.

Standoffs 25mm Diameter Straight

A	300	450	600
B	32	32	32
C	45	45	45
D	332	482	632
E	32	32	32



61033 Entrance Handle

Finish SSS, PSS, NC SSS, NC PSS, NC PB.

Standoffs 16mm Diameter Straight / 30mm Diameter Fixing Disc

A	300	450	600	750	900
B	19	19	19	19	19
C	40	40	40	40	40
D	450	600	750	900	1050
E	16	16	16	16	16
F	30	30	30	30	30



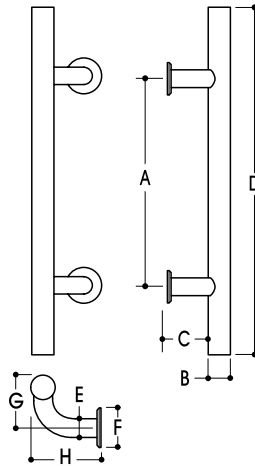
Entrance Handles

61034 Entrance Handle

Finish SSS, PSS, NC SSS, NC PSS, NC PB.

Standoffs 16mm Diameter Straight / 30mm Diameter Fixing Disc / Mitred Offset

A	300	450	600	750	900
B	19	19	19	19	19
C	35	35	35	35	35
D	450	600	750	900	1050
E	16	16	16	16	16
F	30	30	30	30	30
G	45	45	45	45	45
H	60	60	60	60	60

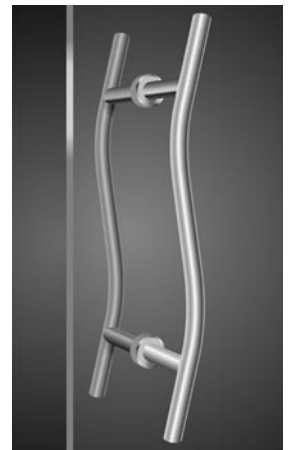
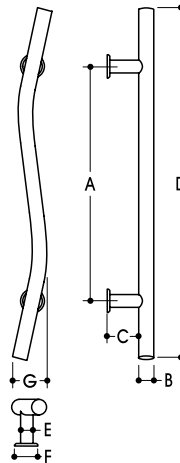


61035 Entrance Handle

Finish SSS, PSS, NC SSS, NC PSS, NC PB.

Standoffs 16mm Diameter Straight / 30mm Diameter Fixing Disc

A	300	600
B	19	19
C	35	35
D	420	820
E	16	16
F	30	30
G	45	45



Handing

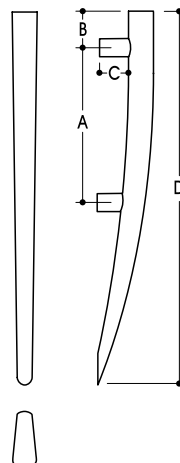
Specify left hand (LH) or right hand (RH)
Refer to handing chart.

61036 Entrance Handle

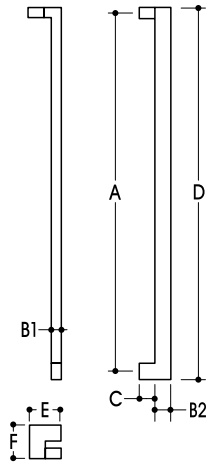
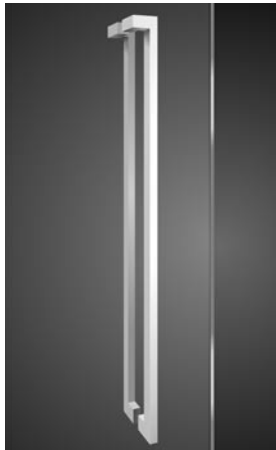
Finish SSS, PSS, NC SSS, NC PSS, NC PB.

Standoffs 19mm Diameter Straight

A	150
B	35
C	30
D	360



Entrance Handles



61037 Entrance Handle

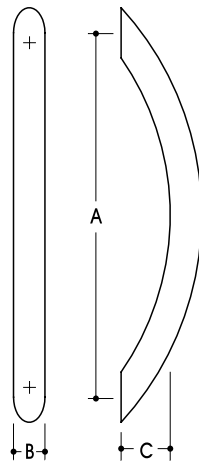
Finish SSS, PSS, NC SSS, NC PSS, NC PB.

Standoffs 40mm x 20mm Rectangular, Mitred / Offset

A	450	600	750	900	1000	1250	1500	1750	2000
B1	20	20	20	20	20	20	20	20	20
B2	40	40	40	40	40	40	40	40	40
C	35	35	35	35	35	35	35	35	35
D	480	630	780	930	1030	1280	1530	1780	2030
E	75	75	75	75	75	75	75	75	75
F	80	80	80	80	80	80	80	80	80

Handing

Specify left hand (LH) or right hand (RH)
Refer to handing chart.

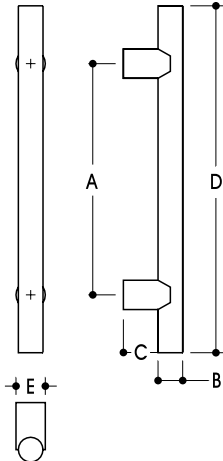


61101 Entrance Handle

Finish SSS, PSS, NC SSS, NC PSS, NC PB.

Standoffs Oval Section

A	300	450
B	32	32
C	50	60



61103 Entrance Handle

Finish SSS, PSS, NC SSS, NC PSS, NC PB.

Standoffs 33mm Diameter Straight

A	300	450	600
B	32	32	32
C	45	45	45
D	450	600	750
E	38	38	38

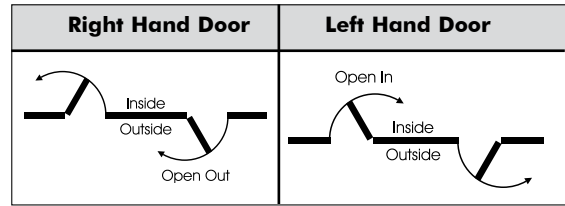


Entrance Handles

Drilling Details

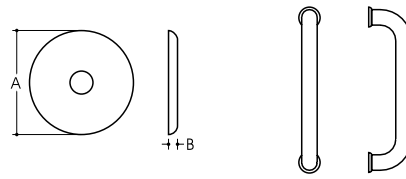
Tube Size	Bolt Size	Hole Size	
		Glass Door	Timber/ Metal Door
25	M8	ø12	ø10
32	M8	ø12	ø10
38	M8	ø12	ø10
50	M8	ø12	ø10

Handing



Rose Options

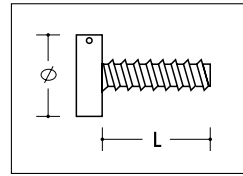
Tube Size	A	B	Rose Code
25	32	3	61-RS32
32	38	3	61-RS38
38	50	3	61-RS50
50	63	3	61-RS63



Accessories

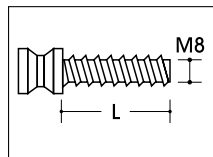
Fixing Disk

Disk Dia	Door Thickness Up to 15mm (L=25mm)	Door Thickness Up to 55mm (L=65mm)	Door Thickness Up to 100mm (L=110mm)
ø 25	61-FD2515	61-FD2555	61-FD25100
ø 32	61-FD3215	61-FD3255	61-FD32100
ø 38	61-FD3815	61-FD3855	61-FD38100
ø 50	61-FD5015	61-FD5055	61-FD50100

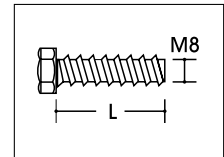


Accessories

Fixing Bolt



To suit ø25mm Handle only



To suit ø32mm, ø38mm, ø50mm Handles

L	Door Thickness	Part No.
25	up to 15mm	61-FB2515
65mm	up to 55mm	61-FB2555
110mm	up to 100mm	61-FB25100

L	Door Thickness	Part No.
25	up to 15mm	61-FB2515
65mm	up to 55mm	61-FB2555
110mm	up to 100mm	61-FB25100

Ordering Procedure

Guide to Catalogue Numbers

BG - Back to back, Glass door.
 BT - Back to back, Timber door.
 DG - Single Glass Door.
 DT - Single Timber/Metal Door to suit maximum 55mm thick door.
 (Please specify door thickness for doors thicker than 55mm.)
 ST - Supply wood screws for timber doors.
 (Please specify door thickness for doors thinner than 30mm.)

SSS Satin Stainless Steel
 PSS Polished Stainless Steel
 NC SSS Satin Stainless Steel
 NC PSS Polished Stainless Steel
 NC PB Polished Brass

Basic Code Centre to Centre Distance Tube Diameter/Section

61002-300/32 BG SSS



Entrance Handles

Fixing Options

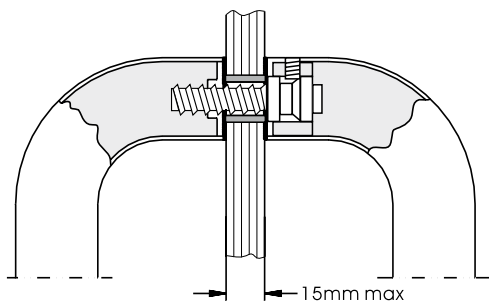
Fixing

Entrance Handles are available with fixings to suit Timber, Metal or Glass Doors.

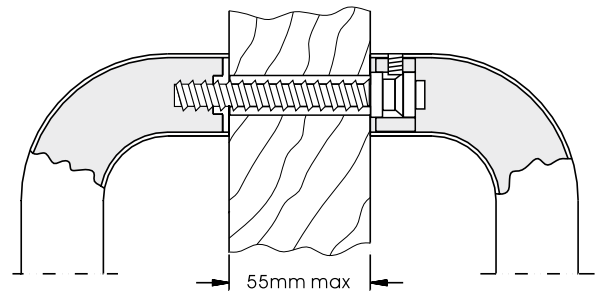
Door Thickness

Standard fixings suit maximum 15mm thick glass doors and maximum 55mm thick timber/metal doors. Additional fixings available to suit special applications upon request.

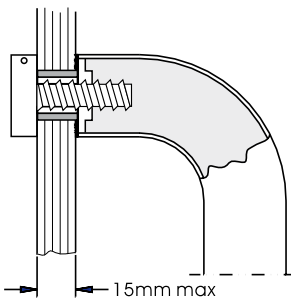
BG Back to Back Fixing, Glass Doors



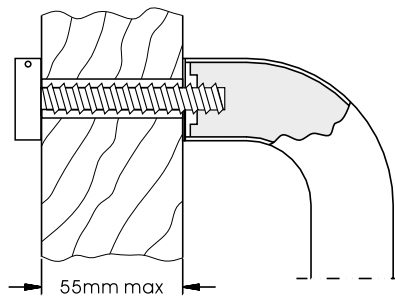
BT Back to Back Fixing, Timber/Metal Doors



DG Single Disk Fixing, Glass Door



DT Single Disk Fixing, Timber/Metal



ST Single Fixing, Timber

